

DanWEC

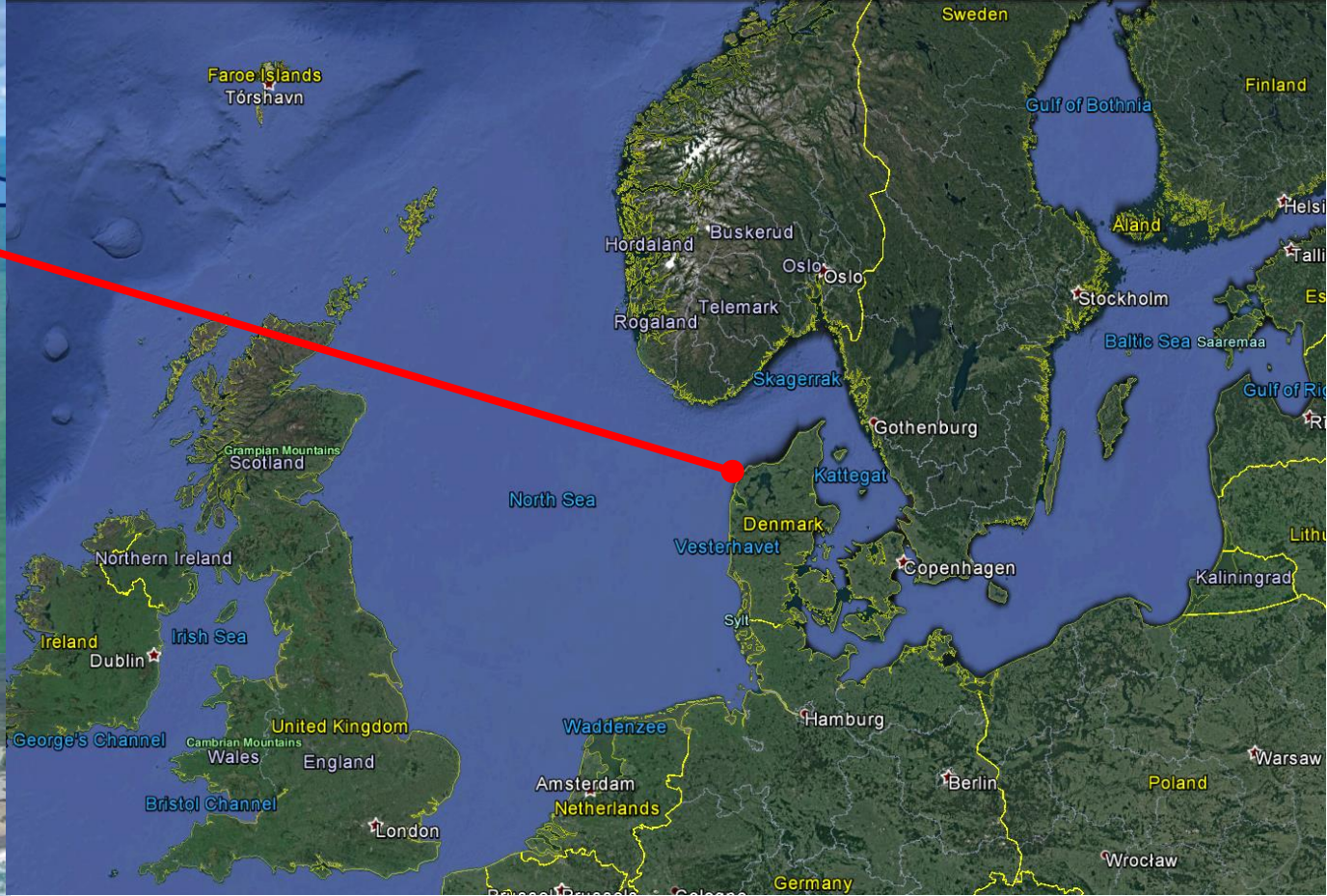
Danish Wave Energy Test Center

Kim Nielsen, board member DanWEC

Webinar on Open Water Test Facilities

5 - 10 - 2020

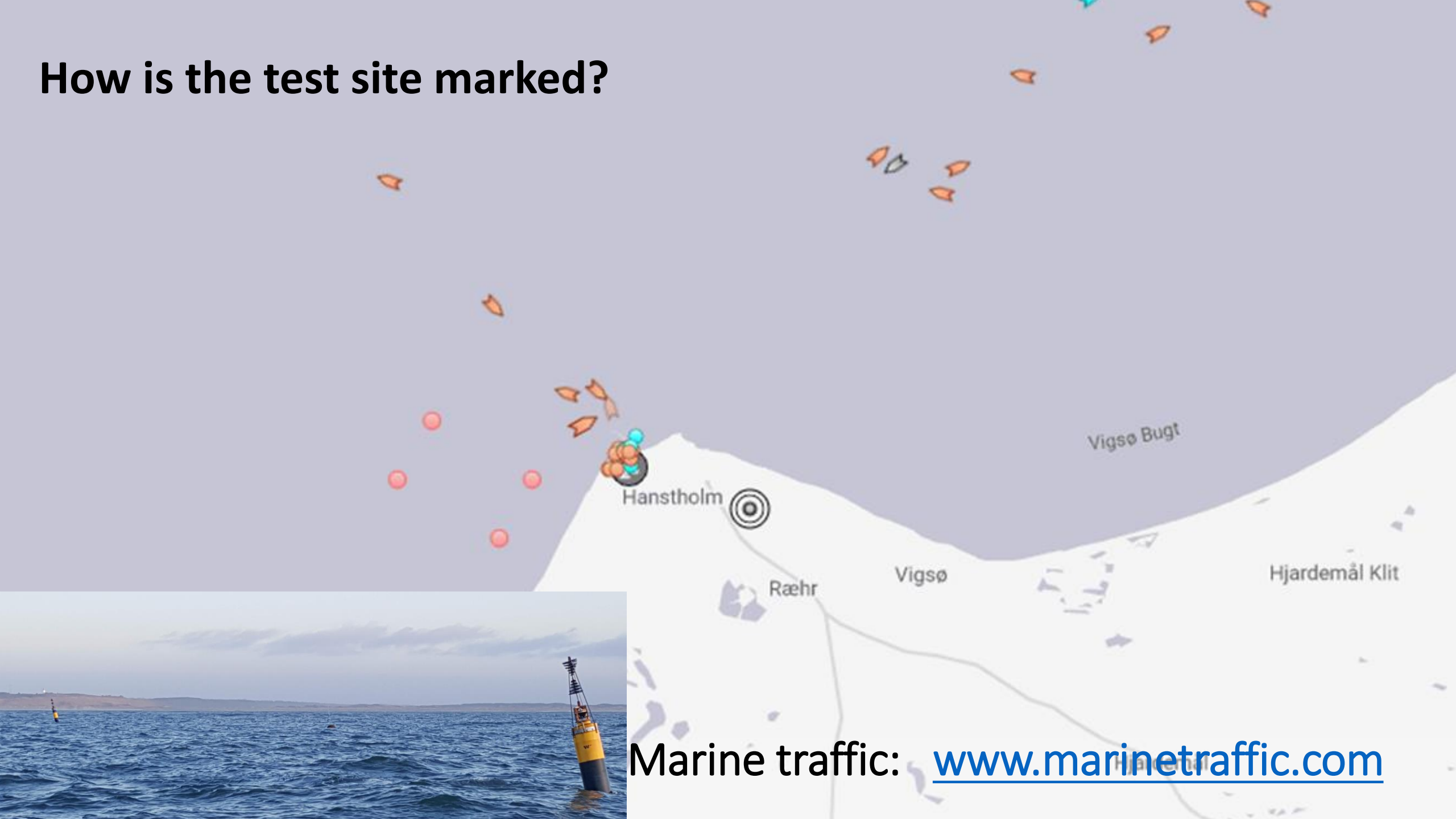




Where is DanWEC located?

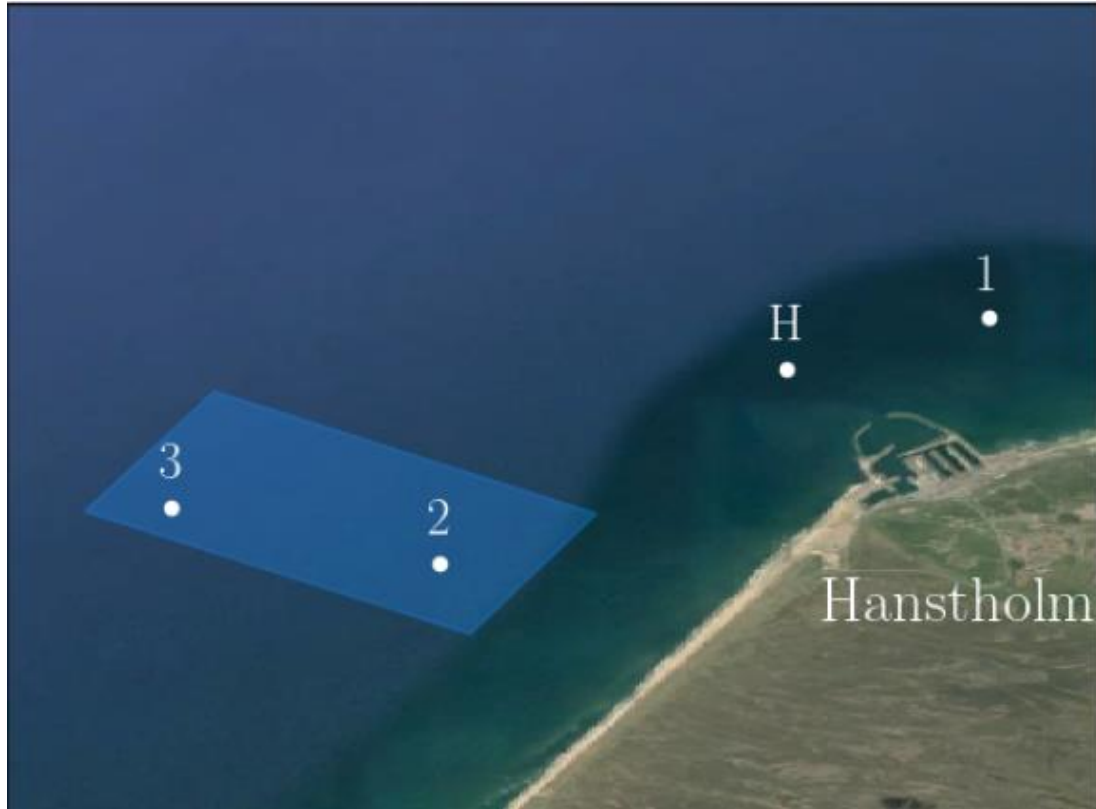
Hanstholm
DanWEC
Danish Wave Energy Center

How is the test site marked?



Marine traffic: www.marinetraffic.com

What is measured at DanWEC?



QUARTERLY REPORT: DANWEC TEST SITE

Period: July 1 2016 - September 30 2016



How big are the largest waves?

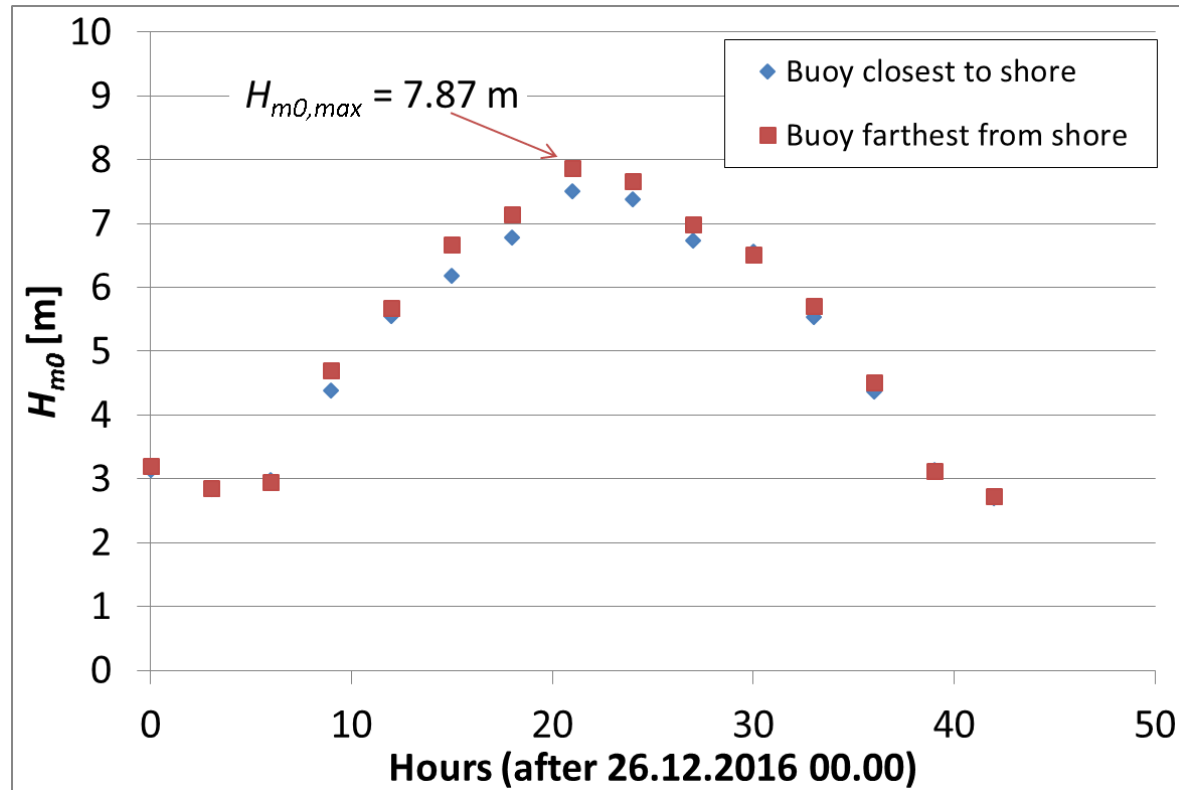
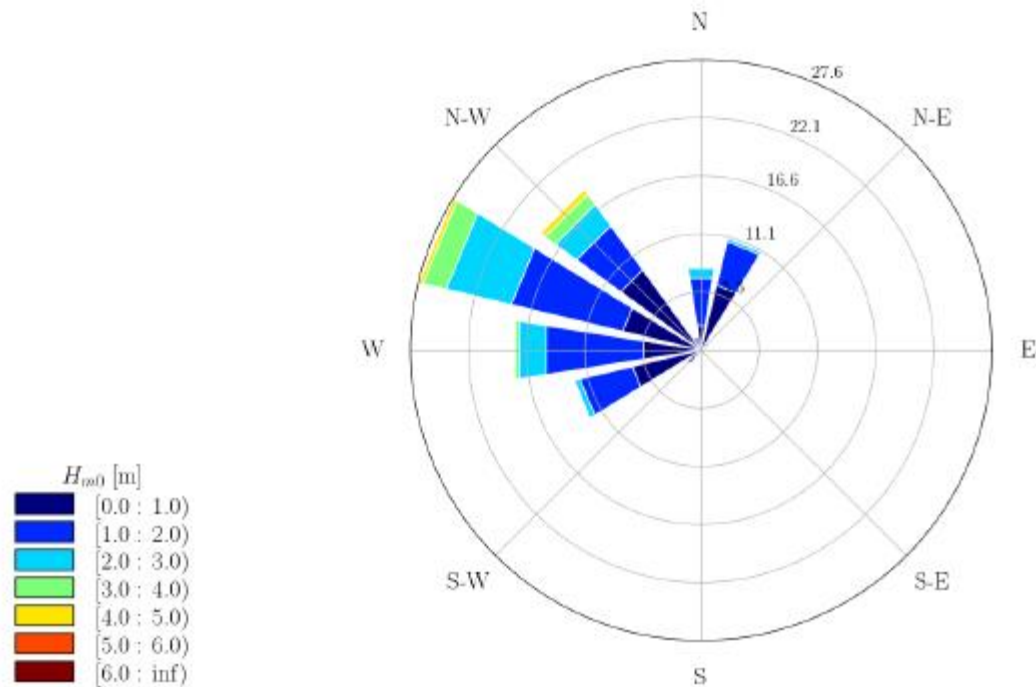


Table 5. DanWEC extreme waves.

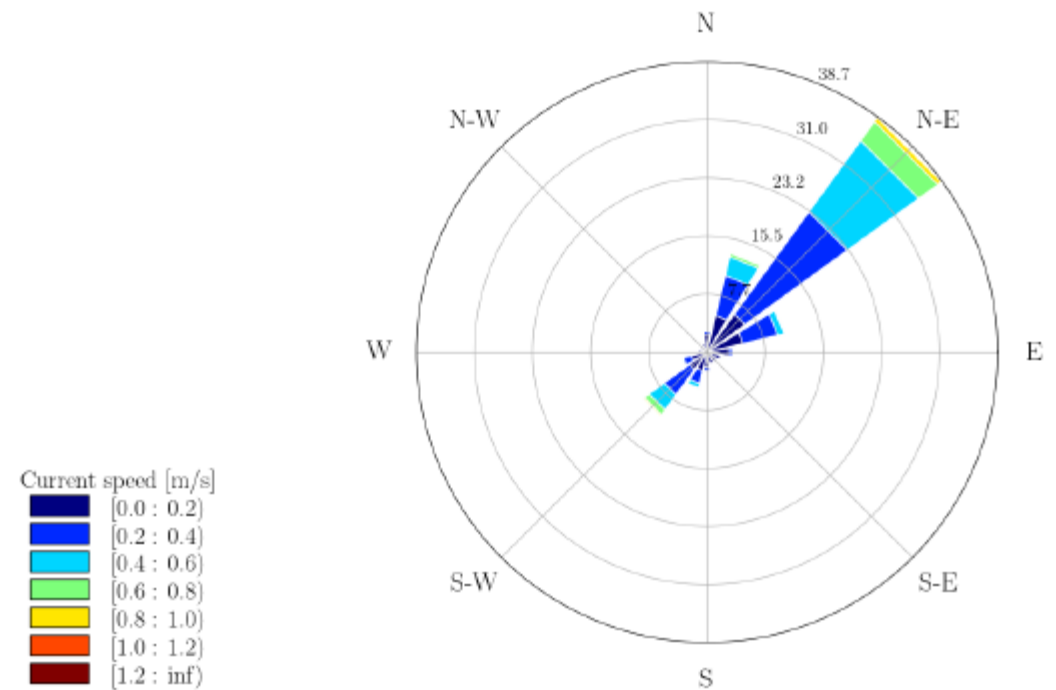
Return Periods [y]	Significant wave height [m]
1	5.56
2	6.05
5	6.63
10	7.04
20	7.43
50	7.92
100	8.28

What direction does the waves come from and currents flow to?

Significant Wave Height



Current speed



DanWEC test site summary

- Realistic and Rough North Sea wave climate
- 2 km x 4 km test site next to the industrial Hanstholm harbour
- High quality real time measured wave, wind and current data
- Co-operation with Aalborg University

Thank you